

## Citizens Guide to Metropolitan Transportation Planning

- **What is the MRMPO?**
- **Transportation Planning Principles**
- **The Transportation Planning Process**
- **Plans & Programs**



**Middle Rogue  
Metropolitan  
Planning Organization**

## Why Should I Get Involved?

If you use transportation, you are involved!



You probably used some form of transportation today. Whether it's a car, bike, bus, wheelchair or walking – you are involved.

Transportation allows us to get to and from work, school, shopping, meetings, events, medical services, etc.



Transportation affects our quality of life, from the air we breathe, safety of our families, and to our own personal budgets.

The transportation system is designed to serve you. The funding to develop and maintain our transportation system comes from several sources – including your tax dollars!

Your input is critical to the overall quality of our region's transportation system, and to ensure your transportation needs are being met.



- What type of transportation do you use?
- Are you satisfied with your choices?
- Do you have any problems with this method?
- Would you like more options?

## Interested in Getting Involved?

- **Consider serving on the Citizens Advisory Council (CAC)**, which is the public sounding board to the MPO Policy Committee. Email [mrmpo@rvcog.org](mailto:mrmpo@rvcog.org) or call us at 541-664-6674.
- **Visit the MRMPO website, [www.mrmpo.org](http://www.mrmpo.org)**. There you can read and download our documents, learn about future events, read meeting minutes, review meeting agendas, and meet the staff.
- **Join the MRMPO email list** to receive notices when public meetings and comment periods are held. Email [mrmpo@rvcog.org](mailto:mrmpo@rvcog.org) or call us at 541-664-6674.
- **Why are there MPOs?**  
<https://www.youtube.com/watch?v=jA8PH7-Gi00>



**Middle Rogue Metropolitan Planning Organization is staffed by:**



**Rogue Valley Council of Governments**  
155 N. First St.  
P.O. Box 3275,  
Central Point, OR 97502  
541-664-6674 | [www.rvcog.org](http://www.rvcog.org)

## What is the MRMPO?

A metropolitan planning organization (MPO) is an entity designated by law for areas with a population of 50,000 or more. They coordinate the development of the area's transportation plans and for coordinating the transportation planning process. Federal funding for transportation projects and programs are channeled through the MPO. **The Middle Rogue Metropolitan Planning Organization (MRMPO)** covers the urbanized area of Josephine County, including the communities of Gold Hill, Grants Pass, and Rogue River.

Federal and state legal responsibilities for MPOs can be summarized as:

- Develop and maintain a long-range **Regional Transportation Plan (RTP)**.
- Develop and maintain a short-range project programming document, the **Transportation Improvement Program (TIP)**.
- Coordinate transportation decisions among local jurisdictions, state agencies, and area transit operators. Develop an **annual work program (UPWP)**.
- House and staff the regional **travel demand model** for the purposes of assessing, planning, and coordinating regional travel demand impacts.

Additionally, due to local circumstances, MRMPO has responsibility under the Clean Air Act (and corresponding state law) for performing regional **air quality conformity** analyses and demonstrate regional transportation conformity for carbon monoxide (CO) and particulate matter (PM<sub>10</sub>).

### Committees

- **Policy Committee**

The MRMPO Policy Committee makes final MRMPO planning decisions. It is composed of elected and appointed officials from Gold Hill, Grants Pass, Rogue River, Josephine County, Josephine County Transit, and ODOT. The Policy Committee considers public comment and recommendations from the **two standing advisory committees**.

- **Technical Advisory Committee (TAC)**

The MRMPO TAC is primarily made up of technical staff from the public works and planning departments of member jurisdictions, local agencies and state planning officials. Because of their technical expertise, TAC members are mostly involved with the transportation planning process. TAC advises the Policy Committee on technical transportation issues and reviews all of the transportation documents presented to the Policy Committee.

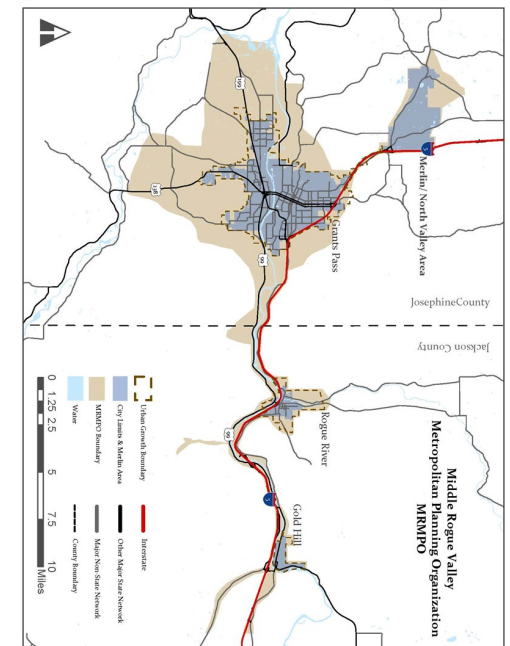
- **Citizens Advisory Council (CAC)**

This committee has three representatives from Grants Pass, one member each for the cities of Rogue River, and Gold Hill and Jackson County,

and two members representing Josephine County. Three additional members may be considered for each of the following interests: freight industry, mass transit, and active transportation. The CAC meets monthly and considers and advises on all aspects of the MPO's activities.

The standing advisory committees also receive public comment. In addition to these two committees, the Policy Committee from time to time authorizes the formation of ad hoc committees to provide input on specific

### MRMPO Planning Area



This guide is to help keep you informed and encourage your participation in the transportation planning activities of the Middle Rogue Metropolitan Planning Organization.

## Transportation Planning Principles

The planning process is more than just a listing of future highways and planned transit upgrades. It requires developing strategies for operating, managing, maintaining, and financing the area's transportation system in order to advance the region's long-term goals.

### MRMPO Partners:

- Federal Highway Administration (FHWA)
- Federal Transit Administration (FTA)
- Oregon Department of Transportation (ODOT)
- Josephine County Transit (JCT)
- Josephine County and the Cities of Gold Hill, Grants Pass, and Rogue River



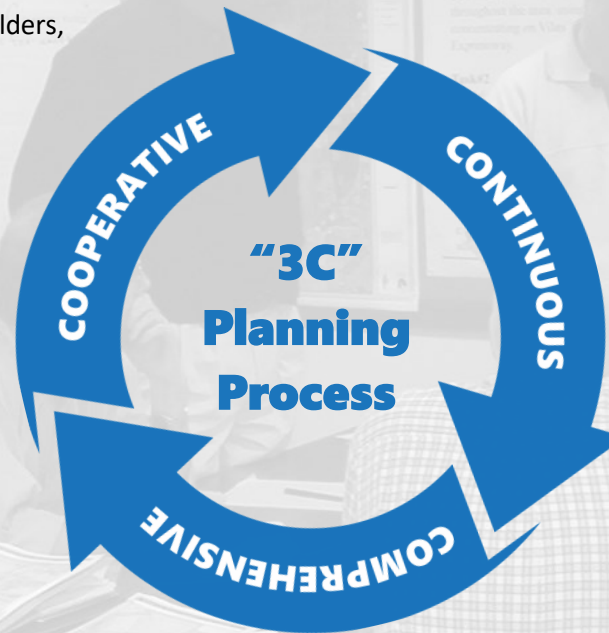
**3C Process:** MPOs were created in order to ensure that existing and future expenditures for transportation projects and programs are guided by the 3C process, which means the transportation planning process is cooperative, continuous, and comprehensive.

### Cooperative

The MRMPO works with state and local stakeholders, including interested individuals and special interest groups

### Continuous

Key documents are continuously reviewed and updated as needed



### Comprehensive

Multiple transportation modes are considered, such as: *transit, personal vehicle, biking, walking, freight, air*

As well as multiple factors, including: *air quality, social justice and employment*

This guide is to help keep you informed and encourage your participation in the transportation planning activities of the Middle Rogue Metropolitan Planning Organization (MRMPO)



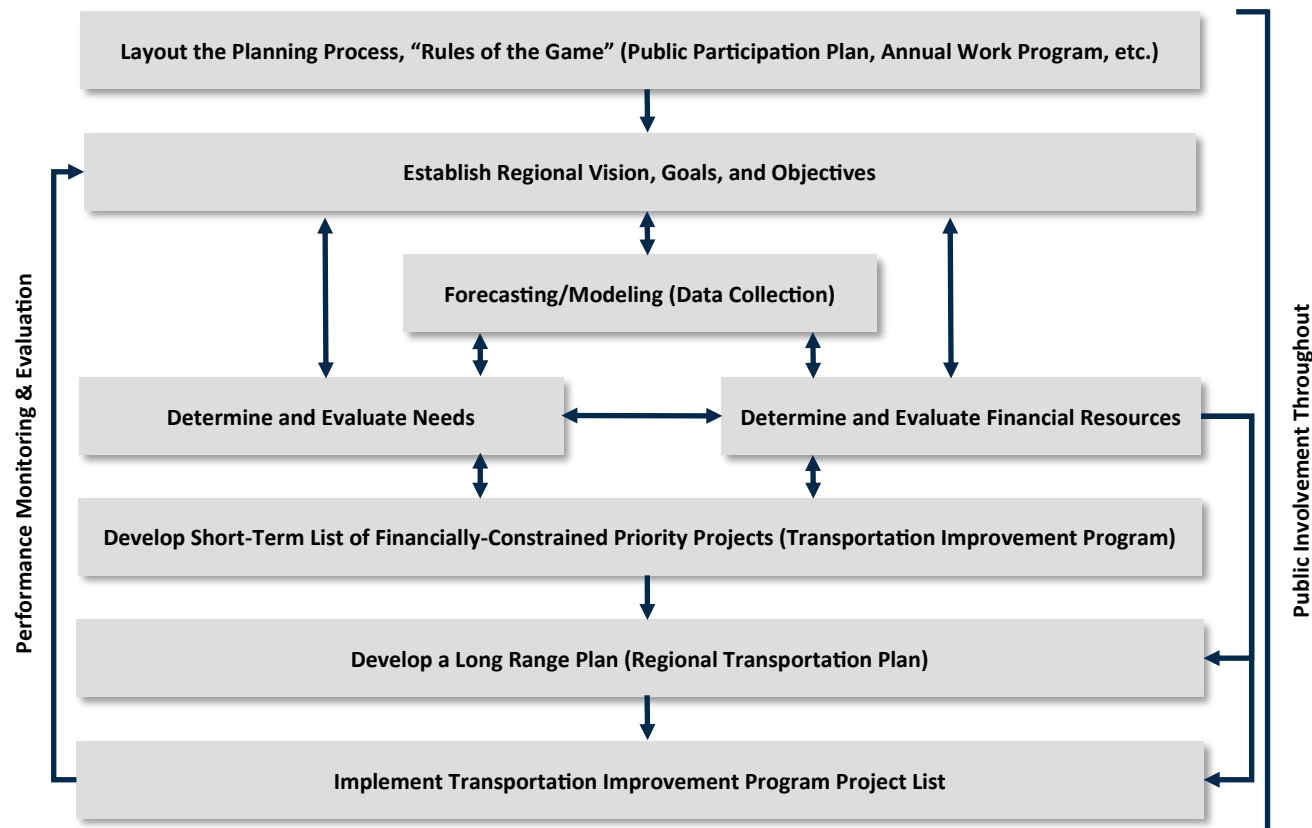
# Understanding the Transportation Planning Process

The metropolitan transportation planning process brings people, information, and ideas together to inform regional transportation decisions. Transportation planning recognizes the critical links between transportation and larger societal goals and includes not only considerations such as mobility, accessibility, and connectivity, but also economic vitality, the environment, livability, social equity, safety, security, and financial constraints.

## Transportation Planning Features:

- Monitoring existing conditions
- Forecasting future population growth, employment growth, and travel demand
- Identifying current and future transportation problems and needs
- Conducting planning studies to address transportation issues
- Developing long-range plans and short-range programs of capital improvements and operational strategies that address problems and needs
- Estimating the impacts of transportation improvements on air quality and populations of concern
- Developing financial plans for implementing the recommended improvements
- Involving the public throughout the process via public meetings, surveys, workshops, public hearings, comment periods, and more.

## Transportation Planning Process



### Public input is used to:

- Identify the goals, visions, opportunities, and needs of the region
- Identify significant projects
- Define alternative strategies
- Develop a long-range transportation plan that includes a list of eligible projects

### From Planning to Implementation

Transportation projects are only implemented ("programmed") after a long, careful, inclusive planning process. Once needs are identified projects must be prioritized according to available funding. This process results in the Transportation Improvement Program (TIP), which is the document that tells which of the identified projects can be funded and built in the near future.

# MRMPO Plans & Programs

MRMPO completes and coordinates many plans, projects, and studies. The MPO is responsible for preparing four primary federally required plans, programs, and findings. These are designed to create a vision, implement and monitor projects, conform to air quality requirements, and provide financial guidance. The documents are:

- **AIR QUALITY CONFORMITY DETERMINATION**
- **REGIONAL TRANSPORTATION PLAN (RTP)**
- **TRANSPORTATION IMPROVEMENT PROGRAM (TIP)**
- **UNIFIED PLANNING WORK PROGRAM (UPWP)**

View these documents at [www.mrmppo.org](http://www.mrmppo.org).

## Air Quality Conformity Determination

**What:** The MRMPO prepares air quality conformity determinations (AQCD) for the federal component of the RTP and the TIP as required by state and federal law.

**How Often:** Updates the RTP and TIP are required every 4-years. In certain cases, an AQCD may be needed when new projects are added to the RTP and TIP.

**Significance:** In order for the MRMPO to receive federal funding, the document needs to show that the region will continue to meet federal and state air-quality standards for the duration of the planning period.

## Regional Transportation Plan (RTP)

**What:** The RTP is the main MPO document guiding future transportation improvements. It sets goals that are developed from federal guidelines and public and stakeholder input. The plan documents the transportation needs for the future, forecasts available revenue and estimates the costs of projects.

**How Often:** The RTP is updated every 4 years with a minimum horizon of 20 years.

**Significance:** Projects that use state or federal funds must be included in the RTP.

**Purpose of the RTP:** The goal of the MRMPO is to develop and maintain a multimodal transportation system that serves regional needs, promotes safety, supports economic development, and facilitates personal choice in transportation decisions.

Transportation Needs Addressed in RTP		Transit
Transp. Options	Bike & Pedestrian	Street & Hwy
Safety & Security	Parking	Freight

**Other Key Components:** Land Use, Air Quality, Fiscal Constraint, Transportation Demand Mgmt., Transportation Systems Mgmt.

## Transportation Improvement Program (TIP)

**What:** The TIP is used as a management tool to gauge progress in achieving the goals identified in the RTP. It documents the anticipated costs of projects and the expected revenues from local, state, and federal funding sources. Essentially, the TIP is the tool that allows federal funds to be programmed towards projects.

**How Often:** The TIP identifies and lists transportation projects for implementation within the next four federal fiscal years. It is updated annually.

**Significance:** To receive federal funds, projects must be included in the TIP and in most cases must have matching local funds available. As with the RTP, the costs of projects cannot exceed available revenue.

## Unified Planning Work Program (UPWP)

**What:** The UPWP documents the transportation planning activities and products the MRMPO and RVTD will conduct or complete over a year's time.

**How Often:** The UPWP is updated yearly, however it can be amended as needed.

The public has multiple opportunities to comment on and be involved in the development of all plans and programs before they are approved by the MRMPO Policy Committee. **See back of pamphlet for information on how you can get involved!**