



Middle Rogue Metropolitan Planning Organization

Project Funding Application:

Surface Transportation Block Grant (STBG)
Congestion Mitigation & Air Quality (CMAQ)

Federal Fiscal Years: 2022, 2023, 2024

Applications Due: Friday, Aug. 30, 2019

Eligibility

This application is to be used to apply for MRMPO STBG and CMAQ funds. MRMPO will attempt to establish eligibility prior to funding consideration by the Policy Committee. Final eligibility determinations will be made by Federal Highway Administration. Please refer to the instructions for details about information required below.

Project Readiness

Federal funds from both programs to be awarded to projects through this solicitation will be available Oct. 1, 2021 (Federal Fiscal Year 2022), Oct. 1, 2022 (FFY 2023), and Oct. 1, 2023 (FFY 2024). This project will be ready to start, with funds available for match (generally 10.27 %) and additional funds necessary to complete project/phase, in (you must be able to check at least one time frame below to proceed with this application):

Oct. 1, 2021 (FFY 2022) Oct. 1, 2022 (FFY 2023) Oct. 1, 2023 (FFY 2024)

Maps & Photographs

As applicable, maps illustrating project location (with termini) and photographs of area (especially illustrating need or deficiency) are required. These items along with the information provided below will be used to evaluate the project and will be viewed by the Policy Committee as members make funding decisions.

1. APPLICANT & PROJECT INFORMATION - Fill out this part completely
Applicant (Must be MRMPO Member) Partner (if any)
Project Title
Mode: Roadway Transit Bike/Ped Other
Project Description: (Include existing conditions, define need, and describe proposed project.) Attach map and photos
Project Location Detail: (as applicable)
Street(s) Name (or Nearest Street): Functional Class:
Cross Streets, Termini: Total Lineal Feet of Grant-Funded Improvement
Is this project included in an existing plan? No Yes
Plan Name, Page #, Project #:
Staff Contact Phone & Email:

**2. COST ESTIMATE & FUNDING REQUESTED - Fill out this part completely**

<b>Total Estimated Project Cost:</b> For construction projects, attach MRMPO cost estimator or engineer's stamped estimate						
	Year	Federal Funds Requested		Local Funds*	Other	Total
		STBG	CMAQ			
Project Devel.		\$	\$	\$	\$	\$
Design/Engineer		\$	\$	\$	\$	\$
Right-of- Way		\$	\$	\$	\$	\$
Construction		\$	\$	\$	\$	\$
Other		\$	\$	\$	\$	\$
<b>Total</b>		\$	\$	\$	\$	\$

\*Highly leveraged projects earn higher rating)

<b>Fund Preference-</b> if any	STBG	CMAQ	If preference checked, please explain:
--------------------------------	------	------	--

**For CMAQ Funding:** Describe how the project is CMAQ eligible. For partial CMAQ funding, note which eligible elements of the project are seeking CMAQ funding.  
 (Eligibility Guidelines: [https://mrmpo.org/images/asstd%20misc/ODOT\\_CMAQ\\_Guidelines\\_February2018.pdf](https://mrmpo.org/images/asstd%20misc/ODOT_CMAQ_Guidelines_February2018.pdf))

**3. PROJECT EVALUATION CRITERIA - Complete as applicable to project**

Applications will be scored according to how well the project fulfills MRMPO goals in the four areas itemized below: **Mobility, Community Vitality & Livability, Transportation Options** and **Resource Conservation**. Evaluation criteria are based on the region's transportation goals and federal planning requirements. A full explanation of these goals-based criteria is in the attached guidance. Reviewing the goals may help in providing the best information about your project. **It is not anticipated that any one application would respond to all items in this section.**

**Information provided in the shaded areas may be used to evaluate project for CMAQ funding.**

**3.a) MOBILITY**

**Safety:** Project anticipated to reduce the number and severity of crashes.

Location: Roadway    Bike/Ped    Transit    Other    Explain "Other":

Crash Data / History:

How does the project increase safety or address/reduce a current safety concern? (Please see ARTS Crash Reduction Factor List on the MRMPO's website for examples of project types).

**Congestion Relief – Reduce Delay:**                      Improve LOS                      Reduce Delay/Idle Time

How Will Project Reduce Congestion and Delay? Include idle time estimate. Measurable heavy-duty vehicle improvements should be entered in section 3.b

**Promote Connectivity:**                      Roadway                      Bike/Ped                      Transit

Does the project remove or mitigate a current barrier? Is the project part of a systematic approach?

2                      Applicant-Provided ADT \_\_\_\_\_ or Transit Boarding \_\_\_\_\_

**3.b) COMMUNITY VITALITY & LIVABILITY**

**Traditionally Underserved Population Benefit:** *Applicants should consult both Title VI & Environmental Justice Plan and Transportation Needs Assessment for Traditionally Underserved Populations.* Applicant may provide additional information below regarding investment in population areas (Low-Income, Minority, Seniors, Children, Limited English Proficiency) and/or identified needs addressed.

Will project improve handicapped access?

**Benefits Freight Movement**

*Check appropriate:*

Reduce Truck VMT

Reduce Truck Idle

Other (explain at right)

*Provide as appropriate:*

Truck ADT \_\_\_\_\_

Truck Idle Hrs/yr \_\_\_\_\_

Anticipated Truck Idle Reduction/yr \_\_\_\_\_

Truck VMT/yr \_\_\_\_\_

Anticipated Truck VMT Reduction/yr \_\_\_\_\_

Additional Information:

*(If project reduces truck VMT or emissions, project may be evaluated for CMAQ funds. Light-duty vehicle reductions should be entered in 3a –Mobility, above.)*

**3.c) TRANSPORTATION OPTIONS**

<p><b>Project Reduces Dependence on Motor Vehicles or Single-Occupant Vehicles.</b></p> <p><i>(Utilize look-up calculator for Bicycle/Pedestrian Diversion Rate and enter answers to questions)</i></p>	<p>Yes</p>	<p>Explain:</p> <p>AADT =</p> <p>Vehicles Reduced (VR) =</p> <p>Vehicle Miles Traveled Reduced (VMTR) =</p>
<p><b>Project Supports Increased Transit, Bike, Pedestrian Mode Share</b></p>	<p>Yes</p>	<p>Explain:</p>
<p><b>Project is or Includes Bicycle Facility</b></p>	<p>Yes</p>	<p>Describe Improvement:</p> <p>Total Length: _____</p>
<p><b>Project Is or Includes a Sidewalk on Collector/Arterial or path activity center(s)</b> (such as banks, churches, hospitals, health care facilities, park and ride lots, office parks, post offices, public libraries, shopping areas or grocery stores, universities or junior colleges, parks, schools, commercial, high density residential, transit stops).</p>	<p>Yes</p>	<p>Explain:</p> <p>These alleys will create routes to activity centers. Most location are within walking and biking distance to the downtown core area.</p>
<p><b>Level of Traffic Stress (Bicycle/Pedestrian): 1=low;4=high</b></p> <p><b>What are the posted speed limits?</b></p> <p><b>What is the number of travel lanes?</b></p> <p><b>What is AADT?</b></p>	<p>Yes</p>	<p>(Please see handout entitled "Level of Traffic Stress" and refer to multi-modal analysis APMv2_Ch 14 on MRMPO's website)</p> <p>Alleys are low speed, low volume routes for local access users. These routes provide a low level of traffic stress to bicyclist and pedestrians.</p>



**3.d) RESOURCE CONSERVATION**

**Environmental Mitigation:** Describe conservation features to be incorporated (*e.g.: permeable surface, wetland protection, etc.*).

**Air Quality Benefits** (*in addition to those identified elsewhere*)

<p><b>Diesel Vehicle Project</b> (check one)</p> <p>Diesel Retrofit                  Diesel Fuel Conversion                  Alt Fueling Station                  Other (explain at right)</p>	<p>Project Description:</p> <p>New Fuel Type: _____</p> <p>Number on-road vehicles covered or served: _____ vehicles</p> <p>Annual mileage all project vehicles within MRMPO area: _____ miles/yr</p>
--	---

<p><b>Greenhouse Gas Emission Reductions (CO<sub>2</sub>)</b> Yes</p> <p><i>(Generally, project that reduces travel by combustion vehicle)</i></p>	<p>Explain:</p>
--	-----------------

<p><b>Emerging Technology</b> Yes</p> <p><i>(Describe technology to be incorporated)</i></p>	<p>Explain:</p>
--	-----------------

<p><b>System Preservation</b> Yes</p> <p><b>Pavement Preservation</b> Yes</p> <p><i>(How project extends the life of existing facility)</i></p>	<p>Explain:</p>
---	-----------------

**VMT Reduction:** (Explain how project will reduce travel) / (For Bike/Pedestrian Utilize Bike/Ped Look-up Calculator)

Estimate VMT Reduction \_\_\_\_\_ miles/yr.

<p><b>System Efficiency</b> Yes</p> <p><i>(Project expands capacity without major investment; improves function without increasing capacity.)</i></p>	<p>Explain:</p>
---	-----------------

**Project Lifespan** \_\_\_\_\_ yrs.      **For CMAQ Funding:** Duration of PM10 & CO Benefit \_\_\_\_\_ yrs.

*(Duration of improvement, program or service in this application)*

**4. ADDITIONAL PROJECT INFORMATION**    Optional; Information not submitted elsewhere





Document Path: O:\GISUser\Projects\Users\Lin Brandt\ArcMap\Projects\PDF\Alley Pave Projects.mxd

Date Saved: 9/26/2019 2:04:14 PM

**4TH-DIVISION, BURGESS-BRIDGE**

1 inch = 80 feet



**CITY OF GRANTS PASS**  
 Public Works Department  
 101 Northwest "A" Street  
 Grants Pass, OR 97526  
 Phone: (541) 450-6110

Web: [www.grantspassoregon.gov](http://www.grantspassoregon.gov)

DISCLAIMER: The Geographic Information Systems (GIS) data made available on this map are developed and maintained by the City of Grants Pass and Josephine County.





Document Path: O:\GIS\UtilityProjects\Utility\Bland\ArcMapProjects\PDF\Alley\Alley\_Pave\_Projects.mxd

Date Saved: 9/26/2019 3:28:44 PM

**BURGESS-BRIDGE, PINE-CREEK**

1 inch = 80 feet



**CITY OF GRANTS PASS**  
 Public Works Department  
 303 Northwest "A" Street  
 Grants Pass, OR 97526  
 Phone: (541) 450-5110

Web: [www.grantspassoregon.gov](http://www.grantspassoregon.gov)

DISCLAIMER: The Geographic Information Systems (GIS) data made available on this map are developed and maintained by the City of Grants Pass and Josephine County.





Document Path: O:\GIS\user\Projects\Utility\Brands\ArcMap\Projects\PDF\Alley Pave Projects.mxd

Date Saved: 9/26/2019 3:38:44 PM

# G-I, WESTHOLM-WILDWOOD

1 inch = 80 feet



**CITY OF GRANTS PASS**  
 Public Works Department  
 101 Northwest "A" Street  
 Grants Pass, OR 97526  
 Phone: (541) 450-6130

Web: [www.grantspassoregon.gov](http://www.grantspassoregon.gov)

DISCLAIMER: The Geographic Information Systems (GIS) data made available on this map are developed and maintained by the City of Grants Pass and Josephine County.





Document Path: D:\GIS\Users\Projects\GIS\GIS\Projects\2024\Alley Pave\Projects.mxd

Date Saved: 6/19/2024 2:44 PM

**H-I, 9TH-10TH**  
1 inch = 80 feet



**CITY OF GRANTS PASS**  
Public Works Department  
101 Northwest "A" Street  
Grants Pass, OR 97526  
Phone: (541) 450-6110

Web: [www.grantspassoregon.gov](http://www.grantspassoregon.gov)

DISCLAIMER: The Geographic Information Systems (GIS) data made available on this map are developed and maintained by the City of Grants Pass and Josephine County.





Document Path: D:\GIS\Users\Projects\Users\Jason Brandt\ArcMap\Projects\PDFs\Alley Pave Projects.mxd

Date Saved: 9/16/2019 9:28:44 PM

**H-I, OAK-PINE**  
1 inch = 80 feet



**CITY OF GRANTS PASS**  
Public Works Department  
101 Northwest "A" Street  
Grants Pass, OR 97526  
Phone: (541) 450-6110  
Web: [www.grantspassoregon.gov](http://www.grantspassoregon.gov)

DISCLAIMER: The Geographic Information Systems (GIS) data made available on this map are developed and maintained by the City of Grants Pass and Josephine County.





Document Path: O:\GIS\Users\Projects\Users\Lin Brandt\ArcMap\Projects\PDF\Alley Pave Projects.mxd

Date Saved: 9/15/2015 3:28:44 PM

# H-I, PINE-CREEK

1 inch = 80 feet



**CITY OF GRANTS PASS**  
 Public Works Department  
 101 Northwest "A" Street  
 Grants Pass, OR 97526  
 Phone: (541) 450-6110

Web: [www.grantspassoregon.gov](http://www.grantspassoregon.gov)

DISCLAIMER: The Geographic Information Systems (GIS) data made available on this map are developed and maintained by the City of Grants Pass and Josephine County.





Document Path: D:\GIS\UserProjects\Users\Jon Brandt\MapProjects\PDF\Alley Fave Projects.mxd

Date Saved: 9/16/2019 3:08:44 PM

**H-I, OAK-HIGH**  
1 inch = 80 feet



**CITY OF GRANTS PASS**  
Public Works Department  
101 Northwest "A" Street  
Grants Pass, OR 97526  
Phone: (541) 450-6110

Web: [www.grantspassoregion.gov](http://www.grantspassoregion.gov)

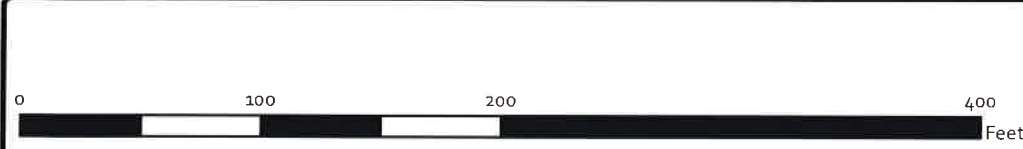
DISCLAIMER: The Geographic Information Systems (GIS) data made available on this map are developed and maintained by the City of Grants Pass and Josephine County.





Document Path: O:\GIS\Users\jason.brandt\ArcMap\Projects\8\_PDF\All\Way Fave Projects.mxd

Date Saved: 9/16/2019 3:28:44 PM



# I-J, 10TH-11TH

1 inch = 80 feet



**CITY OF GRANTS PASS**  
 Public Works Department  
 101 Northwest "A" Street  
 Grants Pass, OR 97526  
 Phone: (541) 450-6150  
 Web: [www.grantspassoregon.gov](http://www.grantspassoregon.gov)



DISCLAIMER: The Geographic Information Systems (GIS) data made available on this map are developed and maintained by the City of Grants Pass and Josephine County.





Document Path: O:\GIS\User\Projects\Users\Jin Brandt\ArcMap\Projects\PDF\Alley Five Projects.mxd

Date Saved: 9/16/2019 2:38:44 PM

**I-J, JUDSON-ALDER**

1 inch = 80 feet

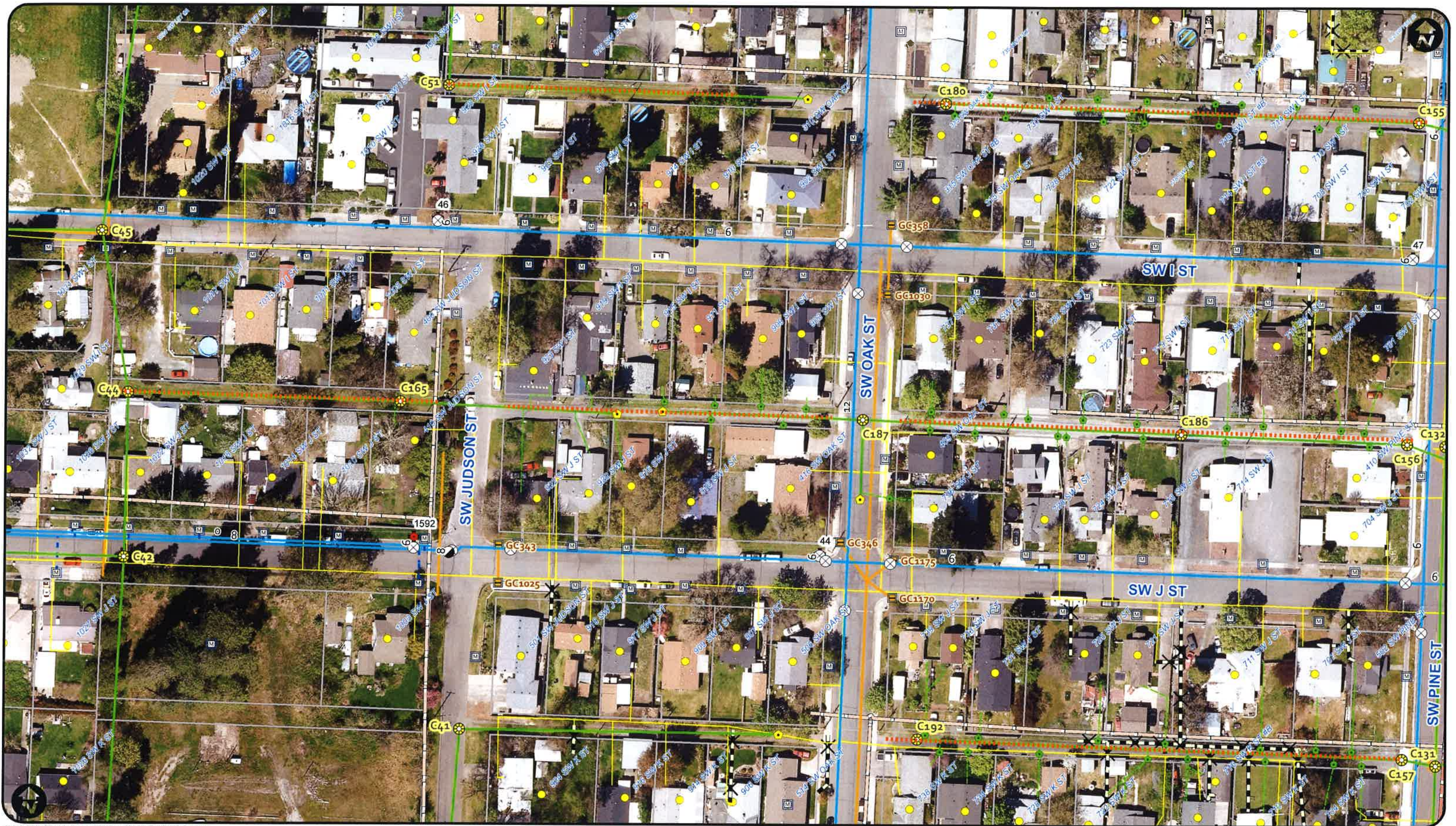


**CITY OF GRANTS PASS**  
 Public Works Department  
 101 Northwest "A" Street  
 Grants Pass, OR 97526  
 Phone: (541) 450-6110

Web: [www.grantspassoregon.gov](http://www.grantspassoregon.gov)

DISCLAIMER: The Geographic Information Systems (GIS) data made available on this map are developed and maintained by the City of Grants Pass and Josephine County.





Document Path: C:\GIS\Users\jason.brandt\ArcMap\Projects\PDFs\Alley Pave Projects.mxd

Date Saved: 5/16/2019 3:28:44 PM

**I-J, OAK-JUDSON**  
1 inch = 80 feet



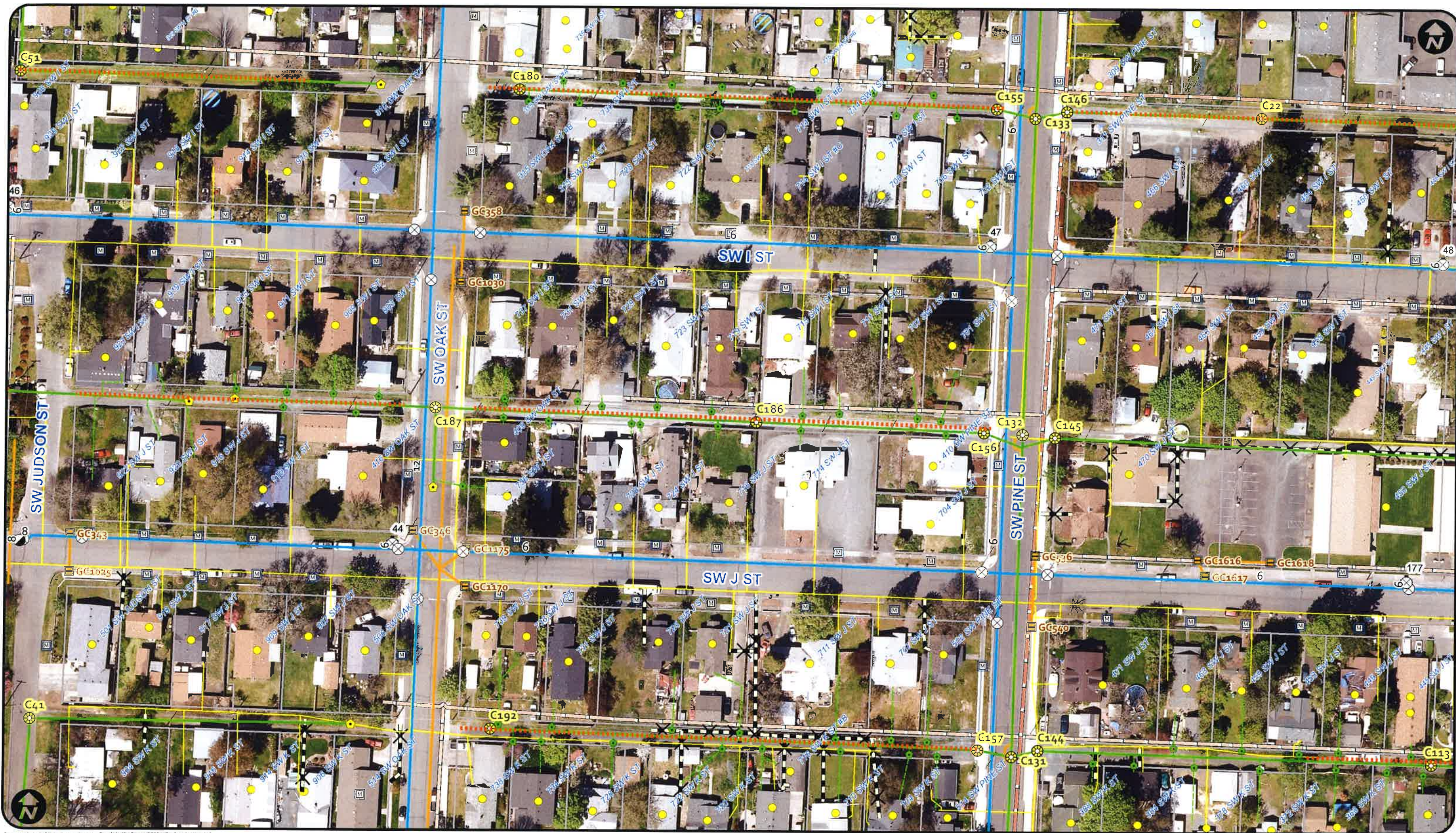
**CITY OF GRANTS PASS**  
Public Works Department  
101 Northwest "A" Street  
Grants Pass, OR 97526  
Phone: (541) 450-6110

Web: [www.grantspass.gov](http://www.grantspass.gov)



DISCLAIMER: The Geographic Information Systems (GIS) data made available on this map are developed and maintained by the City of Grants Pass and Josephine County.





Document Path: C:\GIS\Projects\GIS\Users\jen.Brundt\ArcMap\Projects\POI\Allied\_Pave\_Projects.mxd

Date Saved: 9/15/2019 9:18:44 PM

## I-J, PINE-OAK

1 inch = 80 feet



**CITY OF GRANTS PASS**  
 Public Works Department  
 101 Northwest "A" Street  
 Grants Pass, OR 97526  
 Phone: (541) 450-6110

Web: [www.grantspassoregon.gov](http://www.grantspassoregon.gov)

DISCLAIMER: The Geographic Information Systems (GIS) data made available on this map are developed and maintained by the City of Grants Pass and Josephine County.





Document Path: I:\GIS\Users\Projects\Users\Jon Branch\ArcMap\Projects\PDF\All\PAVE Project.mxd

Date Saved: 6/18/2019 3:28:44 PM

**J-K, PINE-CREEK**

1 inch = 80 feet



**CITY OF GRANTS PASS**  
 Public Works Department  
 101 Northwest "A" Street  
 Grants Pass, OR 97526  
 Phone: (541) 450-6110

Web: [www.grantspassoregon.gov](http://www.grantspassoregon.gov)

DISCLAIMER: The Geographic Information Systems (GIS) data made available on this map are developed and maintained by the City of Grants Pass and Josephine County.





Document Path: G:\GIS\Users\Projects\Users\Jon Brandt\ArcMap\Projects\PDF\Alley\Pass\Projects.mxd

Date Saved: 9/18/2013 1:44 PM



## J-K, 10TH-11TH

1 inch = 80 feet



**CITY OF GRANTS PASS**  
 Public Works Department  
 101 Northwest "A" Street  
 Grants Pass, OR 97526  
 Phone: (541) 450-6150

Web: [www.grantspassoregon.gov](http://www.grantspassoregon.gov)

DISCLAIMER: The Geographic Information Systems (GIS) data made available on this map are developed and maintained by the City of Grants Pass and Josephine County.





Document Path: O:\GIS\Users\juseison\Brand\ArcMap\Projects\PDF\Alley Pave Projects.mxd

Date Saved: 6/12/2025 3:25:44 PM

**J-K, 4TH-CREEK**

1 inch = 80 feet



**CITY OF GRANTS PASS**  
 Public Works Department  
 303 Northwest "A" Street  
 Grants Pass, OR 97526  
 Phone: (541) 450-6110  
 Web: [www.grantspassoregon.gov](http://www.grantspassoregon.gov)



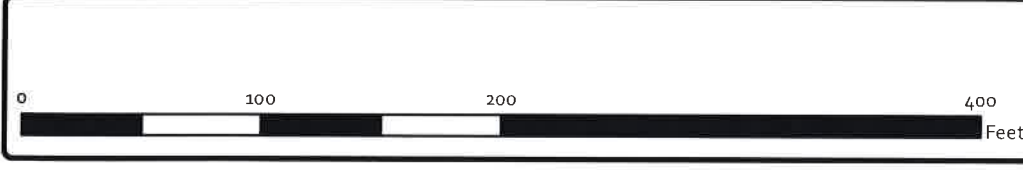
DISCLAIMER: The Geographic Information Systems (GIS) data made available on this map are developed and maintained by the City of Grants Pass and Josephine County.





Document Path: O:\GIS\Users\Project\GIS\Users\Branch\ArcMap\Projects\PDF\Alley Pave\Project.mxd

Date Saved: 9/25/2019 3:28:14 PM



# J-K, 9TH-10TH

1 inch = 80 feet



**CITY OF GRANTS PASS**  
 Public Works Department  
 303 Northwest "A" Street  
 Grants Pass, OR 97526  
 Phone: (541) 450-6110

Web: [www.grantspassoregon.gov](http://www.grantspassoregon.gov)



DISCLAIMER: The Geographic Information Systems (GIS) data made available on this map are developed and maintained by the City of Grants Pass and Josephine County.





Document Path: D:\GIS\Projects\Urban\Branch\MapProjects\8\PDF\Alley Pass Projects.mxd

Date Saved: 12/15/2023 3:28:44 PM

## J-K, GREENWOOD-ALDER

1 inch = 80 feet



**CITY OF GRANTS PASS**  
 Public Works Department  
 101 Northwest "A" Street  
 Grants Pass, OR 97526  
 Phone: (541) 450-6110

Web: [www.grantspassoregon.gov](http://www.grantspassoregon.gov)

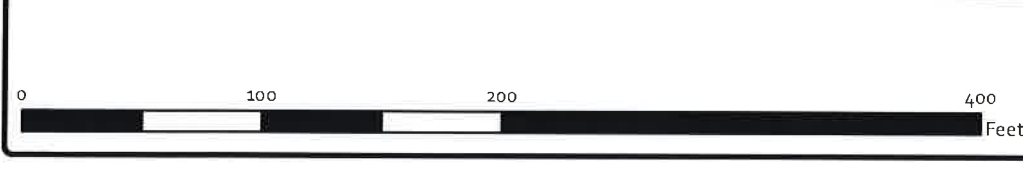
DISCLAIMER: The Geographic Information Systems (GIS) data made available on this map are developed and maintained by the City of Grants Pass and Josephine County.





Document Path: D:\GIS\Users\Projects\Information\3rd\Map\Projects\PDF\alley\3rd\Project\Map

Date Saved: 9/24/2013 3:28:24 PM



# J-K, OAK-PINE

1 inch = 80 feet



**CITY OF GRANTS PASS**  
 Public Works Department  
 101 Northwest "A" Street  
 Grants Pass, OR 97526  
 Phone: (541) 450-6110

Web: [www.grantspassoregon.gov](http://www.grantspassoregon.gov)

DISCLAIMER: The Geographic Information Systems (GIS) data made available on this map are developed and maintained by the City of Grants Pass and Josephine County.





Document Path: Q:\GIS\Projects\Utility\Branch\Map\Projects\16\_PDF\Allby Pass Projects.mxd

Date Saved: 6/16/2019 3:25:44 PM

0 100 200 400 Feet

# K-L, 9TH-10TH

1 inch = 80 feet



CITY OF GRANTS PASS  
Public Works Department  
101 Northwest "A" Street  
Grants Pass, OR 97526  
Phone: (541) 450-6110

Web: [www.grantspassoregon.gov](http://www.grantspassoregon.gov)

DISCLAIMER: The Geographic Information Systems (GIS) data made available on this map are developed and maintained by the City of Grants Pass and Josephine County.





Document Path: O:\GIS\UserProjects\UseMission\Brand\ArcMap\Projects\PDF\Alley Pave Projects.mxd

Date Saved: 9/25/2019 3:24 PM

**K-L, OAK-JUDSON**

1 inch = 80 feet



**CITY OF GRANTS PASS**  
 Public Works Department  
 101 Northwest "A" Street  
 Grants Pass, OR 97526  
 Phone: (541) 450-6110

Web: [www.grantspassoregon.gov](http://www.grantspassoregon.gov)

DISCLAIMER: The Geographic Information Systems (GIS) data made available on this map are developed and maintained by the City of Grants Pass and Josephine County.





Document Path: D:\GIS\Users\Projects\Use\GIS\Branch\ArcMap\Projects\PDF\Alley Pave Projects.mxd

Date Saved: 9/25/2019 3:04 PM

**K-L, PINE-OAK**

1 inch = 80 feet



**CITY OF GRANTS PASS**  
 Public Works Department  
 303 Northwest "A" Street  
 Grants Pass, OR 97526  
 Phone: (541) 450-6110

Web: [www.grantspassoregon.gov](http://www.grantspassoregon.gov)

DISCLAIMER: The Geographic Information Systems (GIS) data made available on this map are developed and maintained by the City of Grants Pass and Josephine County.





Document Path: I:\GIS\UserProjects\Users\jen Brandt\ArcMapProjects\PDF\Alley Pave Projects.mxd

Date Saved: 9/26/2019 3:28:44 PM

# K-CYRESS, WESTERN-WESTHOM

1 inch = 80 feet



**CITY OF GRANTS PASS**  
 Public Works Department  
 101 Northwest "A" Street  
 Grants Pass, OR 97526  
 Phone: (541) 450-6110

Web: [www.grantspassoregon.gov](http://www.grantspassoregon.gov)

DISCLAIMER: The Geographic Information Systems (GIS) data made available on this map are developed and maintained by the City of Grants Pass and Josephine County.





Document Path: O:\GIS\Users\Projects\Urban\Urban\Brand\Aria\Map\Projects\PDF\Alley Pave Projects.mxd

Date Saved: 9/25/2019 3:28:44 PM

## L-BURGESS, PINE-CREEK

1 inch = 80 feet



**CITY OF GRANTS PASS**  
 Public Works Department  
 101 Northwest "A" Street  
 Grants Pass, OR 97526  
 Phone: (541) 450-6110  
 Web: [www.grantspassoregon.gov](http://www.grantspassoregon.gov)

DISCLAIMER: The Geographic Information Systems (GIS) data made available on this map are developed and maintained by the City of Grants Pass and Josephine County.





Document Path: D:\GISUserProjects\Users\jbrand\MapProjects\PDF\Alley Pave Projects.mxd

Date Saved: 9/26/2019 3:28:44 PM

# M-RIVERSIDE, 10TH-11TH

1 inch = 80 feet



**CITY OF GRANTS PASS**  
 Public Works Department  
 101 Northwest "A" Street  
 Grants Pass, OR 97526  
 Phone: (541) 450-6110

Web: [www.grantspassoregon.gov](http://www.grantspassoregon.gov)



DISCLAIMER: The Geographic Information Systems (GIS) data made available on this map are developed and maintained by the City of Grants Pass and Josephine County.





Document Path: O:\GIS\Users\jason.brands\ArcMap\Projects\PDFs\Alley Pave Projects.mxd

Date Saved: 9/16/2013 2:44 PM

## 9TH-10TH, MADRONE-MAPLE

1 inch = 80 feet



**CITY OF GRANTS PASS**  
 Public Works Department  
 101 Northwest "A" Street  
 Grants Pass, OR 97526  
 Phone: (541) 450-6110

Web: [www.grantspassoregon.gov](http://www.grantspassoregon.gov)

DISCLAIMER: The Geographic Information Systems (GIS) data made available on this map are developed and maintained by the City of Grants Pass and Josephine County.





Document Path: G:\GIS\user\Projects\user\ion\Branch\ArcMap\Projects\PDFs\Key\Key\_Pave\_Projects.mxd

Date Saved: 9/25/2019 3:28:44 PM

## 11TH-12TH, MADRONE-A

1 inch = 80 feet

0      100      200      400  
Feet

**CITY OF GRANTS PASS**  
 Public Works Department  
 101 Northwest "A" Street  
 Grants Pass, OR 97526  
 Phone: (541) 450-6110

Web: [www.grantspass.gov](http://www.grantspass.gov)

DISCLAIMER: The Geographic Information Systems (GIS) data made available on this map are developed and maintained by the City of Grants Pass and Josephine County.